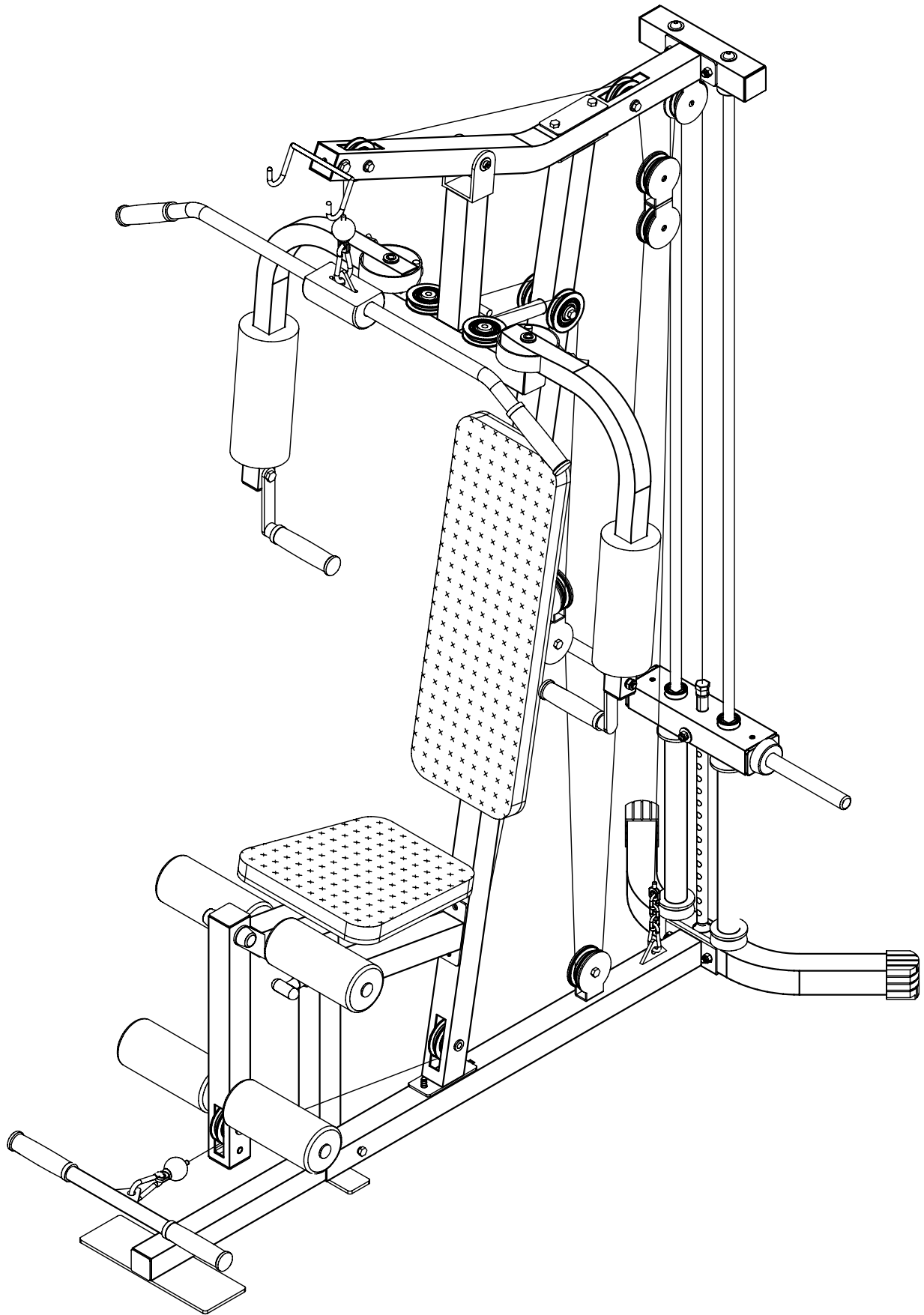
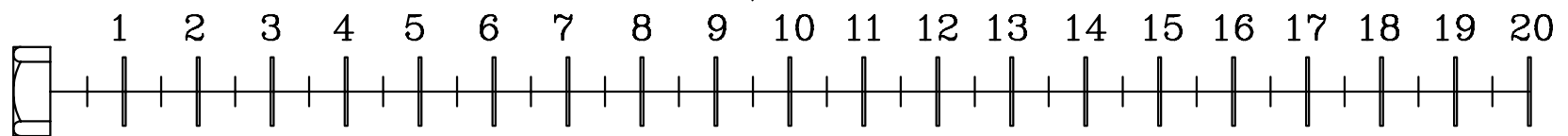
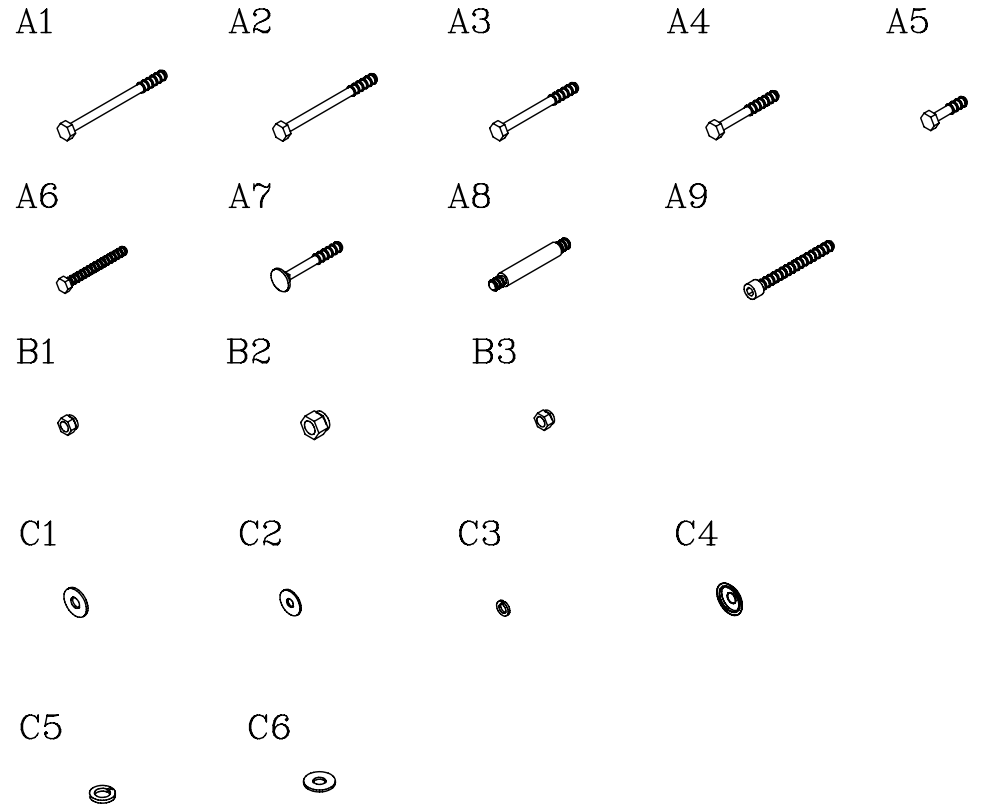


PHG-1000

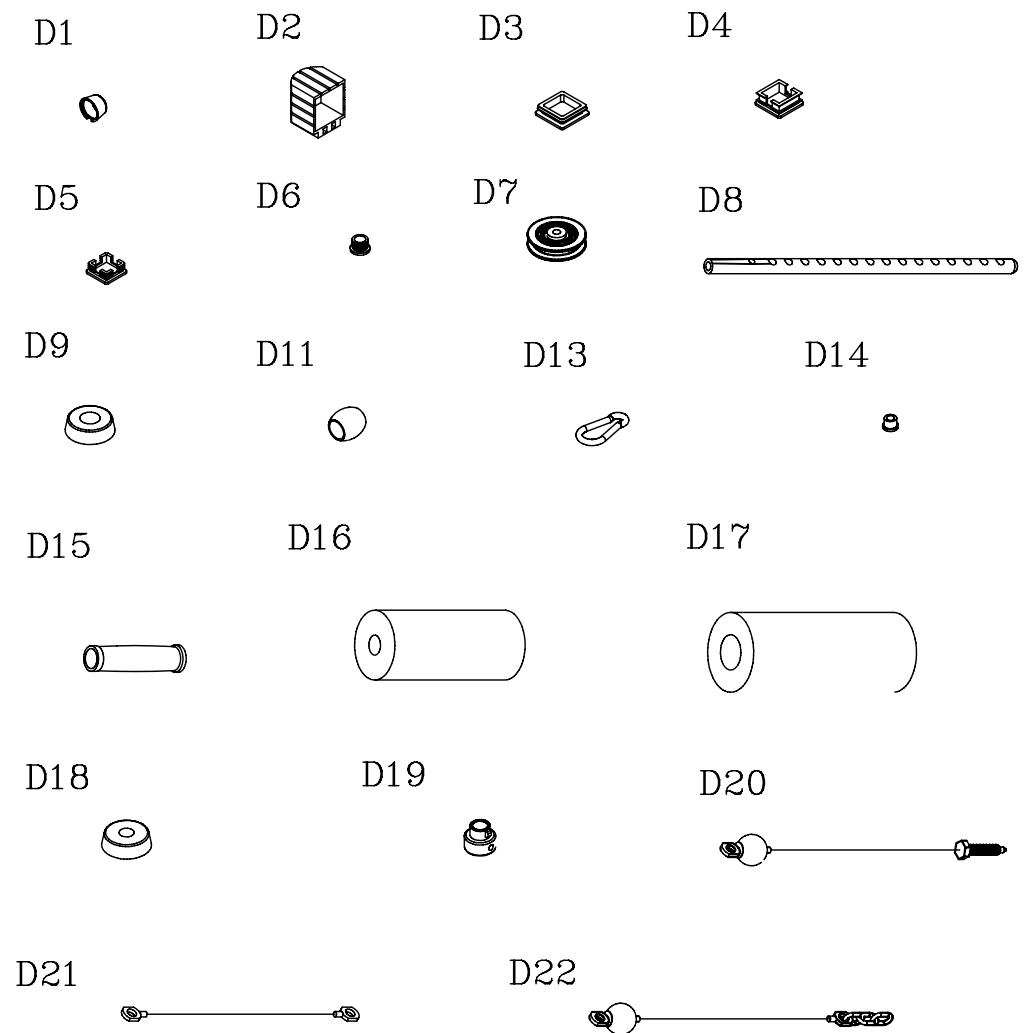


VERSION 0207

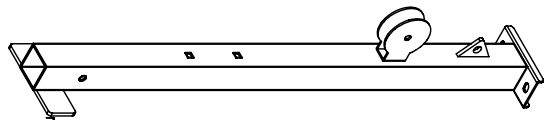
	Qty.
A1. M10X115L HEX HEAD BOLT-----	[1PCS]
A2. M10X110L HEX HEAD BOLT-----	[1PCS]
A3. M10X90L HEX HEAD BOLT-----	[2PCS]
A4. M10X70L HEX HEAD BOLT-----	[12PCS]
A5. M10X40L HEX HEAD BOLT-----	[6PCS]
A6. 5/16"X2 3/4" HEX HEAD BOLT-----	[4PCS]
A7. M10X70L CARRIAGE BOLT-----	[2PCS]
A8. EXTERNALLY THREADED SHAFT (8260-006)--	[1PCS]
A9. CAP 3/8"X3 1/2" ROUNT BOLT-----	[1PCS]
B1. M10 NYLON LOCK NUT-----	[23PCS]
B2. 1/2" LOCK NUT-----	[1PCS]
B3. 3/8" NYLON LOCK NUT-----	[1PCS]
C1. M10 (I.D)WASHER-----	[14PCS]
C2. 5/16" (I.D)WASHER-----	[4PCS]
C3. 5/16" SPRING WASHER-----	[4PCS]
C4. M10 ROUND END CAP WASHER-----	[2PCS]
C5. 1/2" SPRING WASHER-----	[1PCS]
C6. M10XØ19 (I.D) WASHER-----	[2PCS]



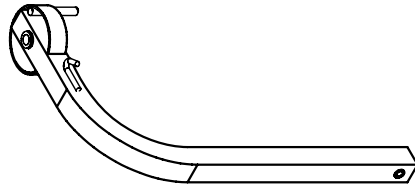
	Qty.
D1. M10 BOLT CAP (9212-026) -----	[2PCS]
D2. 50X50 FOOT CAP (9212-003) -----	[2PCS]
D3. 50X1.8t END CAP (9211-005)-----	[8PCS]
D4. 45X45 END CAP (9211-004)-----	[1PCS]
D5. 38X38 END CAP (9211-003)-----	[2PCS]
D6. $\phi 25.4$ ROUND END CAP (9211-016)-----	[5PCS]
D7. $\phi 74$ mm PULLEY (9213-005)-----	[14PCS]
D8. SELECTOR SHAFT (8210-052)-----	[1PCS]
D9. $\phi 2 \frac{1}{2}$ "X $\phi 26$ RUBBER DOUNT(9310-012)---	[2PCS]
D11. $\phi 25.4$ RUBBER DOUNT (9212-019)-----	[1PCS]
D13. $\phi 6$ mm SPRING SNAP LINK (8810-002)---	[3PCS]
D14. $\phi 16$ STEEL BUSHING (9211-041)-----	[8PCS]
D15. $\phi 1$ "X34X135 RUBBER GRIP (9212-016)----	[6PCS]
D16. $\phi 3 \frac{1}{2}$ "X8" FOAM ROLLER (9161-007)----	[4PCS]
D17. $\phi 4$ "X10" FOAM ROLLER (9161-010)-----	[2PCS]
D18. $\phi 2 \frac{1}{2}$ "X $\phi 19.2$ RUBBER DOUNT (9310-010)	[4PCS]
D19. $\phi 3/4$ " SHAFT CLOOAR (9211-046)-----	[2PCS]
D20. 3380mm STEEL CABLE-----	[1PCS]
D21. 3050mm STEEL CABLE-----	[1PCS]
D22. 3790mm STEEL CABLE-----	[1PCS]



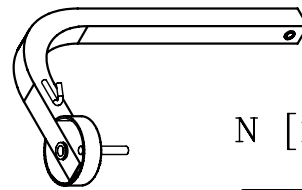
A [1PCS]



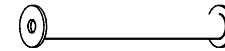
J [1PCS]



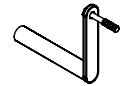
K [1PCS]



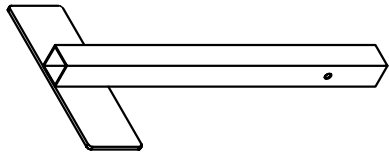
L [2PCS]



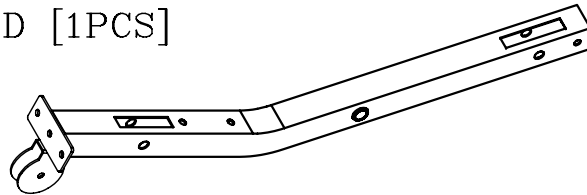
M [2PCS]



B [1PCS]



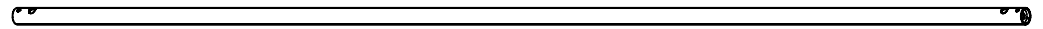
D [1PCS]



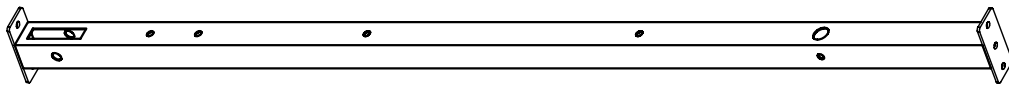
N [1PCS]



O [2PCS]



C [1PCS]



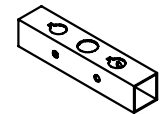
P [1PCS]



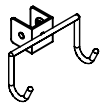
Q [1PCS]



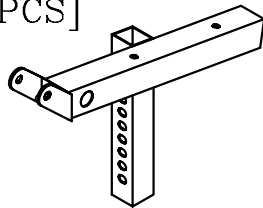
R [1PCS]



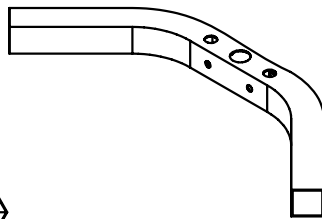
E [1PCS]



G [1PCS]



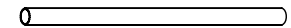
S [1PCS]



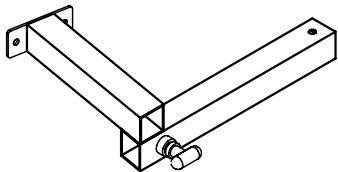
U [1PCS]



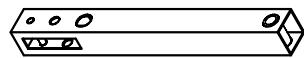
V [2PCS]



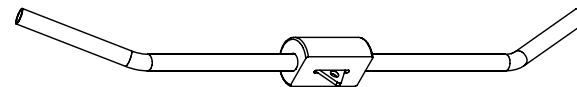
F [1PCS]



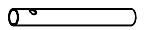
H [1PCS]



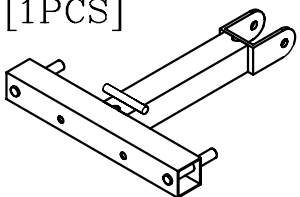
T [1PCS]



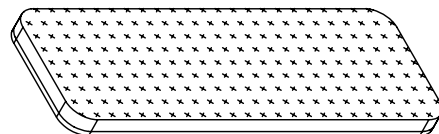
W [1PCS]



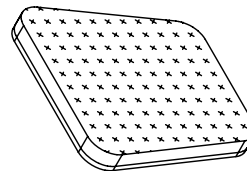
I [1PCS]



X [1PCS]



Y [1PCS]



Z [1PCS]



AA [1PCS]

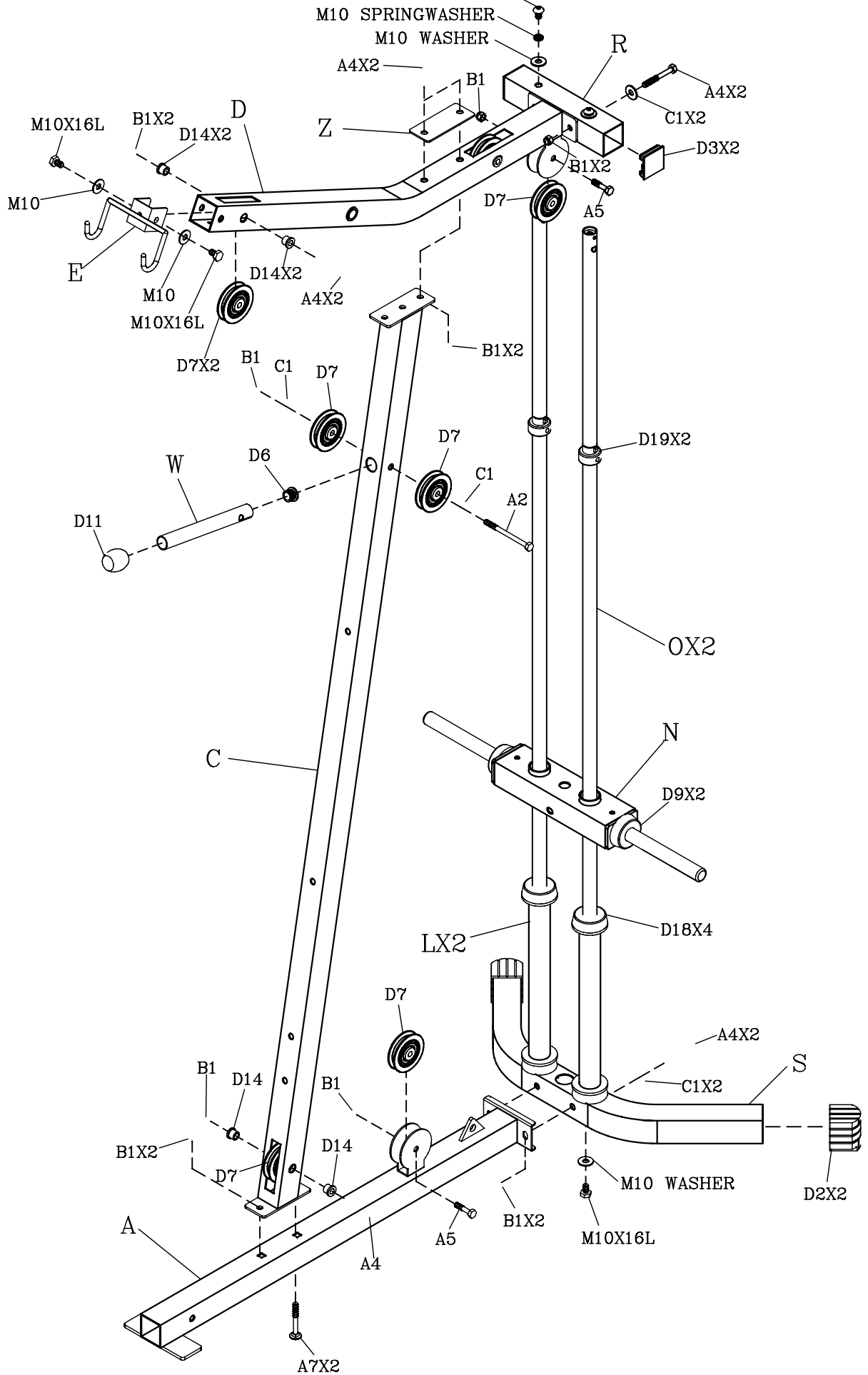


PHG-1000

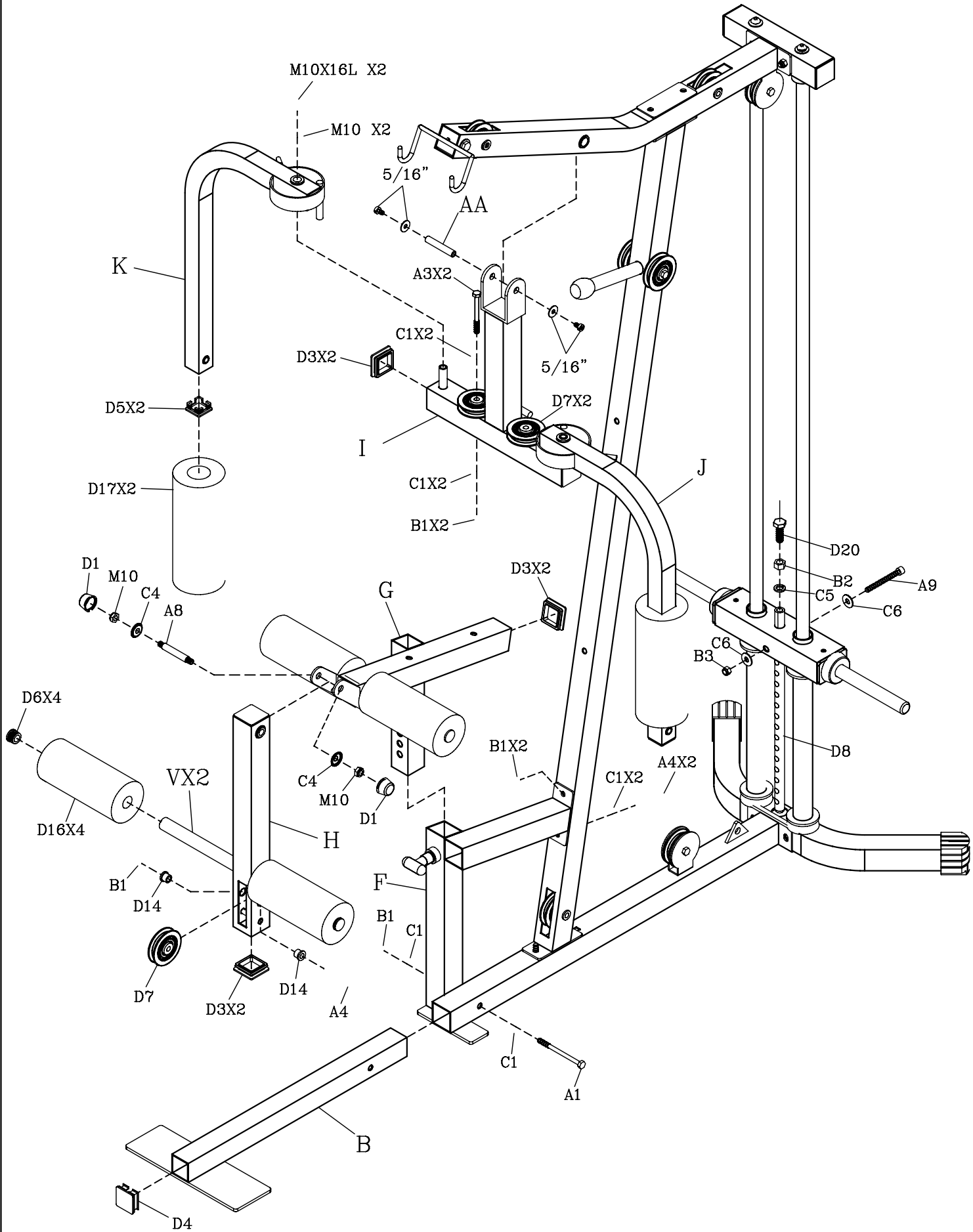
M10X16L ROUND INNER HEX SCREW

M10 SPRINGWASHER

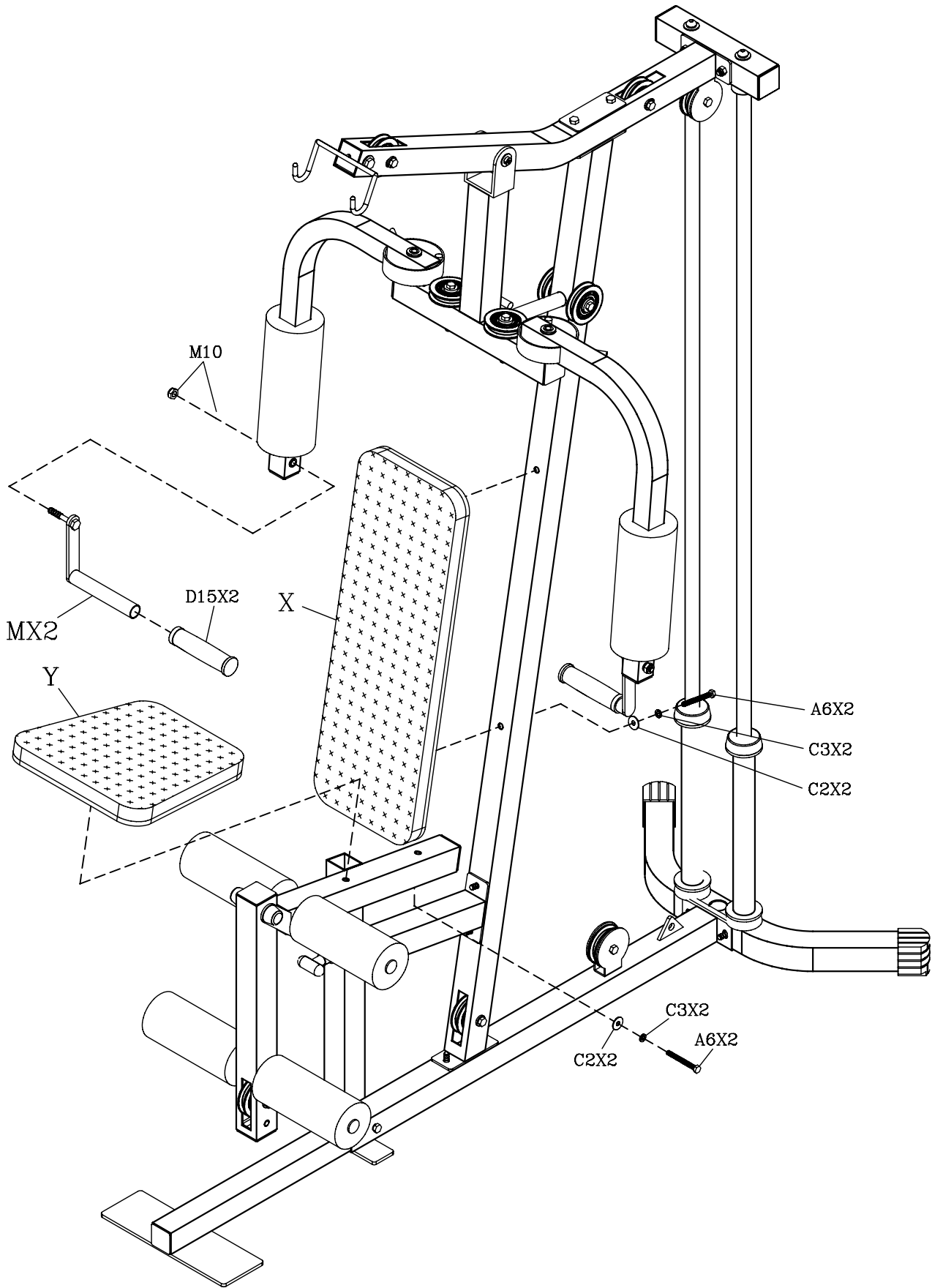
M10 WASHER



PHG-1000



PHG-1000



PHG-1000

